

RED RIVER BASIN



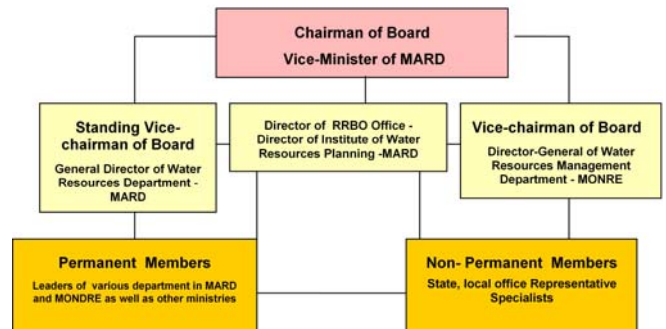
The Red River is the second largest river in Vietnam. It is an international river originating in China, and traversing much of northern Vietnam before emptying into the East Sea. Administratively, the Red River basin covers, or overlaps with, 26 provinces and its population totals 28 million (in 2002), including Hanoi city. It supports a large irrigated area (650,000 ha, mostly in the delta) and is subject to recurrent flood problems. The Red River Delta (RRD) Region consists of 11 provinces and covers 17% of the basin in Vietnam. The upper basin covers about 70% of the Northern Highlands (NH) Region including 8 complete provinces and parts of 7 more.

INSTITUTIONS

The first Committee for Red River Water Control and Development was established in 1961 and its permanent office later became the Institute for Water Resources Planning and Management (IWRPM) and, then, the current IWRP of MARD. In April 2001 MARD created the Red–Thai Binh River Basin Planning Management Board (more simply Red River basin Organization, or RRBO) through Decision No. 38/2001.

During the 2001-2003 period RRBO conducted

management, field investigations on the exploitation of floodplains between Nam Dinh and Ninh Binh, assisting the state regarding the construction of large scale hydropower works in Son La and Tuyen Quang, examining the Red River flood corridor and the embankment of the Red River in Ha Noi, assessing the scope for water supply schemes and hydropower projects, commenting on the strategic plan of national aquaculture development and extension. The lack of funding, office facilities, and operational guidelines for the RRBO, were held as the main constraints to proper data management and communication, and to field investigations of the current exploitation of the basin.



The operation regulation of the RRBO was specified by a ministerial decision in April 2004. The RRBOs' role is to serve as technical coordinating and advisory bodies to MARD, "assessing planning alternatives, basic investigation projects, inventory and assessment of water resources in the river basin; [and] submitting to MARD and authorised state agencies follow-up recommendations and proposals". Other missions include data exchange and management, coordination with other ministries and agencies, capacity building and awareness raising.

ABOUT TWIN2GO

Twin2Go reviews, consolidates, and synthesises research on adaptive and integrated water resources management in basins around the world. The aim is to draw insights relevant to policy and research on issues around adaptive water governance in the context of climate change, and to make them transferable to other basins. Twin2Go further promotes sharing of research results with practitioners and high level decision makers through effective dialogue.

REFERENCES

- Molle F, Hoanh CT. 2008. Implementing Integrated River Basin Management: Lessons from the Red River Basin, Vietnam.
- Nghĩa, T.T. 2004. Report on Red River basin organization. Department of Water Resources, MARD.